

## CompactPRO™

- 320 x 240 Thermal sensor
- ▼ 32° Field of view
- 🌡️ -40°F to 626°F Temperature range
- 📍 6 inches to 1,800 feet distance
- 🌙☀️ Works day & night
- 💧 Waterproof carrying case

CompactPRO is our most advanced thermal imaging camera designed for your smartphone. Made for iPhone® and Android™ top models, this highly-portable thermal imaging camera features a large, 320x240 thermal sensor with high sensitivity and a wide, 32-degree field of view. Offering adjustable thermal span, level, and emissivity settings, the CompactPRO delivers unprecedented high-resolution thermal imaging and software capabilities available at this price.

### Features

#### **320 x 240 High-Resolution Thermal Sensor**

76,800 temperature pixels for maximum image clarity and sensitivity

#### **Adjustable Emissivity**

Calibrate for reflective surfaces when accuracy is critical

#### **Wide, 32-Degree Field of View**

Easily scan a large area to identify potential hazards in seconds

#### **Focusable Lens for Quick Identification**

Aim and focus from 6 inches to 1,800 feet for the sharpest image

#### **Utilizes the Power and Display of Your Smartphone**

Intuitive, free mobile app available on Google Play and iTunes App Store

#### **Waterproof Case that Protects**

Comes with its own waterproof case to withstand the elements

### Benefits

#### **Connect-and-Detect Convenience**

Pocket-sized, highly portable, and easy to use

#### **See More Thermal Detail Where You Need it Most**

Level and span controls let you isolate and capture the details that matter

#### **Accurately Inspect Mechanical and Electrical Equipment**

Diagnose and assess the problem source quickly

#### **Safely Monitor Hazardous Environments**

Evaluate potentially dangerous situations from a safe distance

#### **Time of Day Won't Slow You Down**

Safely examine any job site in daylight or total darkness

#### **Easily Document and Share**

Record images and video of industrial inspections for accurate documentation

### Technical Specifications

<b>Thermal Sensor</b>	:	320 x 240 (76,800 pixels)
<b>Detection Distance</b>	:	6 inches to 1,800 feet
<b>Field of View</b>	:	36 Degree FOV
<b>Temperature Range</b>	:	-40°F to 626°F
<b>Frame Rate</b>	:	>15 Hz Fastframe
<b>Focus</b>	:	Adjustable Focus
<b>Lens Material</b>	:	Chalcogenide
<b>Microbolometer</b>	:	Vanadium Oxide
<b>Pixel Pitch</b>	:	<70 mK
<b>Spectral Range</b>	:	7.5 – 14 Microns
<b>User Interface</b>	:	Free Seek Thermal Mobile App
<b>Temp. Display Scale</b>	:	Fahrenheit, Celsius or Kelvin
<b>Color Palettes</b>	:	9 Options
<b>Storage Media</b>	:	Stores Directly to Smartphone
<b>Battery</b>	:	Low power provided by smartphone (280 mW)
<b>Phone Compatibility</b>	:	Top iPhone® and Android™ models

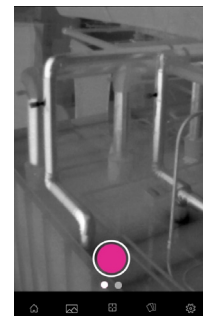
### Device compatibility

Available for iPhone® and Android®  
Compatible with top smartphones and tablets.

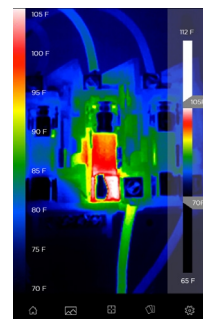
### Seek thermal App & Software device

The free Seek thermal app allows you to customize your experience, record images and videos directly to your smartphone, and easily share them.

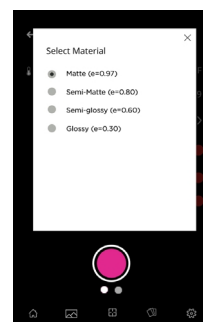
### User interface



**Photo & video**  
Capture and share thermal photos and videos

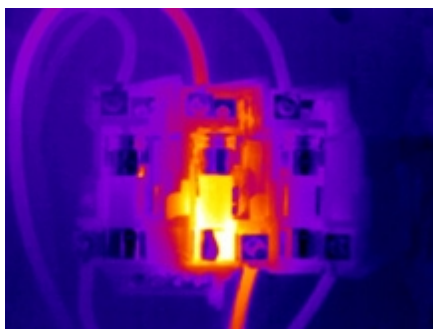


**Span & level**  
Isolate and capture the thermal details that matter

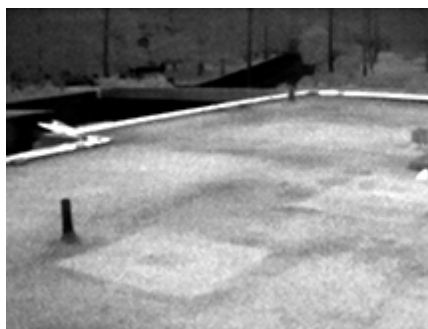


**Emissivity**  
Calibrate for reflective surfaces when accuracy is critical

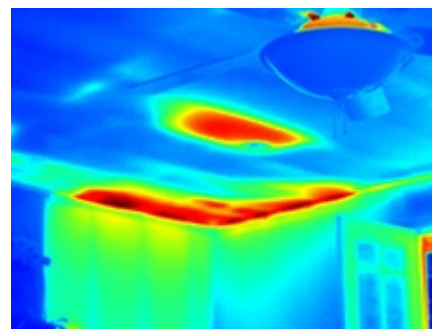
### Thermal applications



Electrical inspection



Roof inspection



Insulation & HVAC inspection