



Student engagement is essential for learning, but it's not always easy to involve the students, especially in large classrooms. Students may limit participation because they're intimidated, unprepared, or scared. Worse yet, they're might even be lost or stuck on a topic but will be too scared to ask. Fortunately, Scientech Student-Response Systems can help you connect with students, even in the largest lecture hall. Not only will your students learn more, and at a higher cognitive level, but you'll also have a greater ability to assess their progress. Scientech Student-Response Systems can be used in learner-centered teaching to prompt discussion, do practice problems, assess student preparation and understanding and to gather student's opinions about the course and its content.

Features

- True/false and multiple choice
- Easy to connect to the session
- Multiple Classroom setups without interference
- Indicator light – Confirms receipt of responses
- Allows for multiple classroom setups without interference
- OS supports : Windos and Linux
- 50 meter signal range
- 2hour charging will provide aprox. 1 month battery life.

Specifications

Two-way RF Technology based.

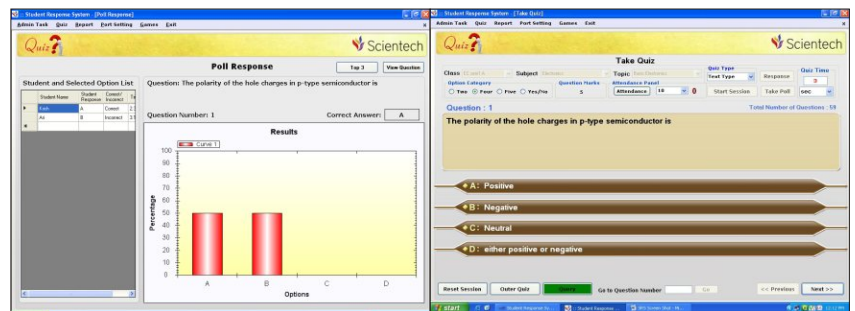
Up to 50 meter range

Dimensions: 45 x 110 x 12 (mm) (WxHxD)

Rechargeable Li-ion battery.

Supports Multiple Choice, True/False and Yes/No.

Windows



Linux

