



Sciencetech TechBooks are compact and user friendly learning platforms to provide a modern, portable, comprehensive and practical way to learn Technology. Each TechBook is provided with detailed Multimedia learning material which covers basic theory, step by step procedure to conduct the experiment and other useful information.

Monitoring of several Vital Physiological parameters provides very essential information about patient simultaneously in one common display board. It helps the doctors to take quick decision in favor of the patient when there is no time for further analysis and treatment. These parameters includes ECG, HR, ST segment analysis, PVC's analysis, Respiration rate, Pulse rate, Body temperature, NIBP and SPO₂ measurement. Sciencetech TechBook 2365 Multi-parameter monitor is capable of monitoring seven parameters simultaneously over one window, with the help of only four sensors. These sensors are for ECG (Up to seven leads), Temperature, SPO₂ and NIBP. Measurement of respiration is done by ECG sensor (RA-LA impedance method).

Sciencetech TechBook 2365 Multiparameter Monitor has sufficient memory to store the important information of patient, different kinds of Alarms etc. It is specially designed for educational purpose, student can learn how to understand these signal and how important these signals for our survival.

Features

- Specially design for educational purpose
- Light weight, compact and portable
- Both visual (LED) and audible (Buzzer) alarm indications
- High resolution 12.1" color TFT display
- Simultaneous monitoring of ECG ,SPO₂ ,NIBP , PR, Respiration and Temperature
- ECG waveforms up to 7-leads on the same screen
- Arrhythmia, S-T segment and PVC's analysis
- 72-hours graphic and tabular trends of all parameters
- 72 alarm events of all parameters recall
- 32 seconds full-disclosure waveform review
- 500 NIBP measurement data can be storage and recall
- Data and waveforms color can be adjustable
- Suitable for adult, pediatric and neonatal patient

Scope of Learning

Study of:

- ECG, HR, PVC's and ST analysis
- NIBP (Systolic, Diastolic & MAP) measurement
- SPO₂ measurement
- Respiration(RA-LA impedance method)
- Body temperature measurement
- Pulse rate measurement
- Simultaneous measurement of all parameters

Technical Specifications

Measurement

NIBP

- Method : Oscillometry
- Modes : Manual/Auto/Continuous
- Auto measure time : Adjustable
- Measurement range : 10 - 270 mmHg

ECG

- Lead mode : 3/5-lead
- Lead selection : I, II, III, avR, avL, avF, V
- Heart rate range : Adult : 15 - 300 bpm, Pediatric/Neonatal (15-300bpm)
- ECG waveform : 2 channels
- Accuracy : ± 1 bpm or ± 1 %, which is greater
- Alarm : Yes, audible and visual alarm

SPO₂

- Measurement range : 0-100%
- Accuracy : 70-100%, $\pm 2\%$ 0-69%,
Unspecified

Pulse rate

- Range : 20-254 bpm
- Accuracy : ± 3 bpm

Respiration

- Method : RA-LL impedance method
- Range : Adult : 0-120 rpm
pediatric/neonatal (0 - 150 rpm)
- Apnea alarm : Yes

Temperature

- Range : 0-50 °C
- Accuracy : ± 0.1 °C
- Channel : Dual-channel

Product Tutorial : Online on www.SciencetechLearning.com

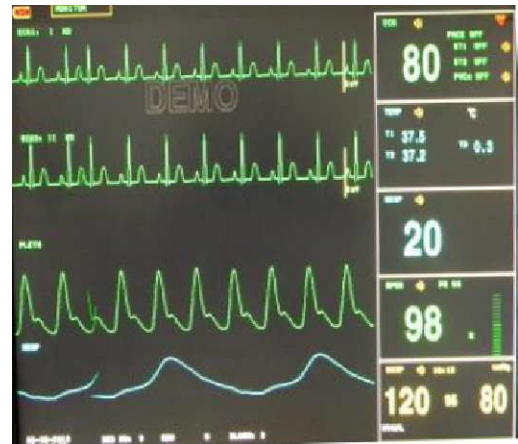
Dimensions (mm) : W 326 x D 252 x H 52

Power supply : 110V - 260V AC, 50/60Hz

Weight : 1.5 Kg. (approximately)

Operating Condition : 0-40°C, 85% RH

Included Accessories : NIBP cuff, Temperature sensor, SPO₂ sensor, ECG Lead cable, ECG Disposable electrode cable, Power supply, Mains cord - 1 no.



Standard



OXYCRG



Big Char